

# VERICUT I/F

Vericut Interface

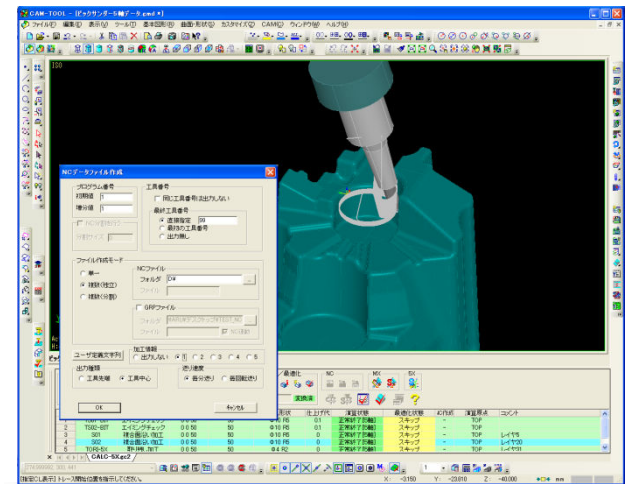
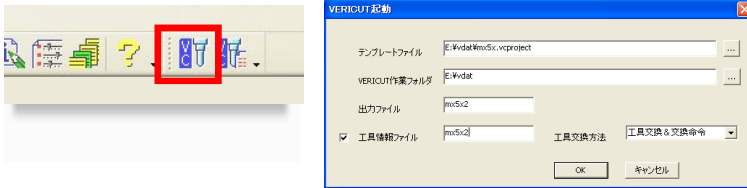
**CAM-TOOL**  
CAD/CAM System for Molds & Dies

*Seamless connection to Vericut!*

*It's capable from CAM-TOOL Version5 update as an option*

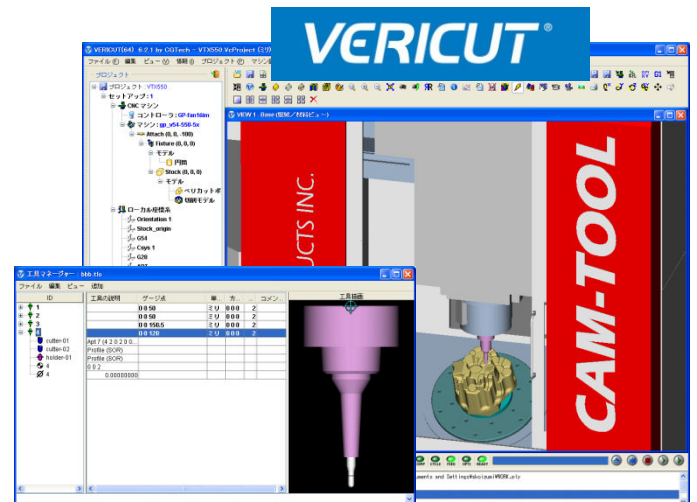
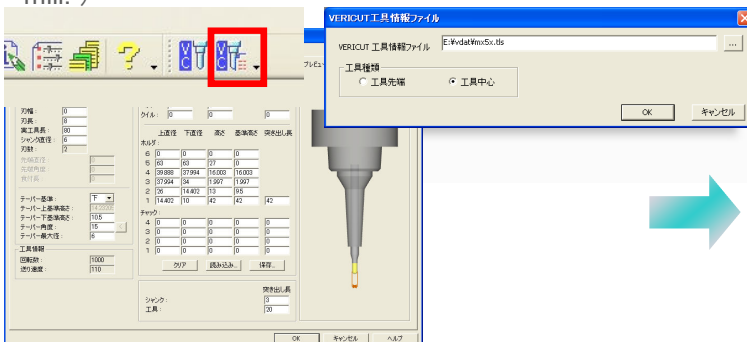
## Execute in CAM-TOOL directly

Vericut interface provides seamless operability from CAM-TOOL to Vericut. It starts from Vericut Icon in CAM-TOOL then exports data of tooling (tool and holder), NC program name, tool number into Vericut automatically. Especially, at the simultaneous 5 axis machining, it will realize safe and effective machining by checking all of interference of machine tool.



## Create Vericut Tool information file

It can create Vericut Tool information file from tooling data in optimization setting in CAM-TOOL. ( CAM-TOOL Version5 Update features the tool/holder catalog which has 12000 end mill. )



## System requirements

CAM-TOOL  
VERICUT

Version5 update or later  
Ver6.2.2 or later